



**MANUFACTURING AND REGENERATION OF LARGE-SCALE PARTS**

Up to a length of 22 m and a work piece weight of 25 t

**Coating**

- Thermal spraying with zinc and aluminium
- Liquid paint coating with 2C- an 1C- materials
  - Epoxy resin
  - Micaceous iron ore
  - Polyurethane



**Blasting of**

- Steel parts
- Welded constructions
- Flame-cut parts and blanks

**Mechanical production and regeneration of components and assemblies**

- CNC-turning
- CNC-milling
- CNC-sawing
- Grinding
- Thermal, powder and liquid paint coating

Do not hesitate to ask us and take Your advantage of the individual or combined power of **SUN, WIND and WATER!**



Carl-von-Bach-Straße 8  
09116 Chemnitz  
Germany

Phone +49 (0)371/400 42-20  
Fax +49 (0)371/400 42-211  
info@heos-energy.de  
[www.heos-energy.de](http://www.heos-energy.de)



**Your Specialist  
Regarding  
Renewable  
Energy Plants**

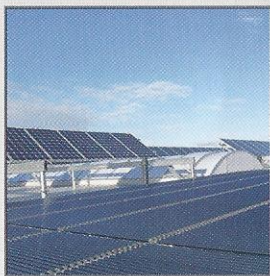


## PHOTOVOLTAIC SYSTEMS

**Design and realization** of photovoltaic systems for **rooftop or ground installation**

Turnkey projects from **small-scale systems** for private customers up to industrial **megawatt plants**

Installation options **without roof penetration** and **low loads** on flat roofs

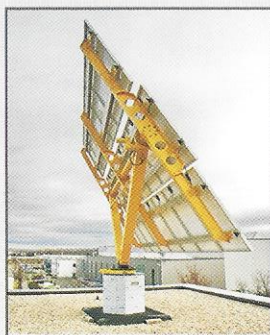


## SOLAR TRACKER HEOS HT35-2

Solar tracker **of own production** for **ground installation** or **building integration**

The rated capacity of **5,04 kWp** may be varied depending on the solar modules used.

The precise two-axis tracking offers **an increased energy yield of up to 40 percent** compared to rigidly mounted equipment.



## VWEA HEOS H-SERIES

Development, production, distribution and assembly of **vertical axis** wind turbines (VAWT) up to 100 kW rated power

**Strengths** in difficult operating conditions

- Extreme wind speeds in mountain areas
- Squally winds
- Frequently changing wind directions

**High acceptability** with operators and local residents

- Reduced noise emission
- Low shadow cast

## WIND TURBINE GEARS

**Repair and upgrade** of wind turbine gears up to a rated power of 2,5 MW including documentation

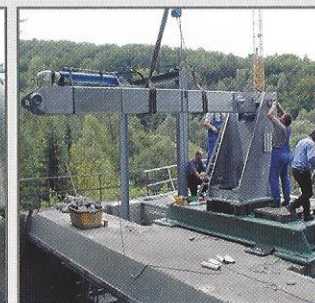
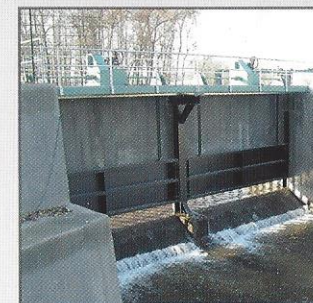
Genuine spare parts and service regeneration of existing components



## HYDROELECTRIC POWER PLANTS

**Renovation and automation** of already existing hydroelectric power stations with up to three turbines and a total power of up to 1 MW

**Services as general contractor including related construction works**



Competent and short-term **repair and production** of individual components

Construction, production and assembly of complete hydraulic steel structures

Design, delivery and assembly of hydraulic components, PLC-Controller and electrical switch boards